

THE 44th ANNUAL HARDWAY RACE, May 11, 2024

SAILING INSTRUCTIONS



Pierpont Bay Yacht Club
Ventura, CA



Santa Barbara Sailing Club
Santa Barbara, CA

- 1.0 RULES:** The Race will be governed by the *rules* as defined in the *Racing Rules of Sailing*. The Hardway course around Santa Cruz Island is designated US Coastal, the other courses are designated US Nearshore as specified in the US Sailing Safety Equipment Regulations (USSER). See paragraph 16.1 herein for modifications to the USSER. This race is designated as a PHRF Random Leg race. The Race Committee, at its sole discretion, without leave for protest, may score the race or series employing the PHRF ratings consistent with those identified in PHRF SoCal's Rule 2.2, and the conditions actually experienced on the Race Course.
- 2.0 ENTRIES:** Current PHRF ratings are required for all PHRF spinnaker class entrants. PHRF ratings are not required for Coastwise Course PHRF non-spinnaker class entrants. Coastwise Course non-spinnaker class entrants without PHRF ratings will be assigned a temporary handicap for this race only by the race management team; however, PHRF certificates are required in order to be eligible to win trophies. ORCA TCF ratings will be applied to ORCA Multihull Class boats. Registration via Regatta Network is required by 1700 hours PDT on Friday May 10, 2024. The registration link is www.regattanetwork.com/event/27972
- 3.0 NOTICES TO COMPETITORS:** Notices to competitors will be posted on Regatta Network and/or email by 0900 hours on Saturday, May 11th.
- 4.0 CHANGES IN SAILING INSTRUCTIONS:** Any change in the sailing instructions will be posted on Regatta Network and/or email.
- 5.0 RACE SCHEDULE:** There will be no skippers meeting. The warning signal for the first class is scheduled for 1055 PDT.
- 6.0 CLASSES:** Based on entries, there will be one or more HARDWAY Course spinnaker classes, one or more Coastwise Spinnaker Course classes, one or more Coastwise Non-Spinnaker Course classes, and an ORCA handicapped Multihull Class. Course identification, Class breaks, and order of starts will be posted by 0900 PDT on Regatta Network and/or email.

The Class Flags to be used for starting the classes listed above will be:

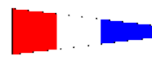
Class 1 - Code Flag Numeral "1" (red dot on white)



Class 2 - Code Flag Numeral "2" (white dot on blue)



Class 3 - Code Flag Numeral "3" (red, white, blue)



Class 4 - Code Flag Numeral "4" (white cross on red)



Class 5 - Code Flag Numeral "5" (yellow, blue)



Class 6 - Code Flag Numeral "6" (black over white)



PHRF Non-spinnaker classes are defined as follows:

* No spinnakers or spinnaker-like sails such as flashers, cruising 'chutes, MPS's, gennakers, etc. are allowed.

- * All headsails must meet the measurement requirements of RRS Rule 50.4.
- * Only one spinnaker pole or whisker pole of 1.4J maximum length shall be used at a time and, when in use, shall be attached to the foremost mast.
- * Use of headsails larger than 155% LP carries a 6 second per mile penalty unless the boat is handicapped for that sail.
- * More than one headsail may be carried set, and the headsails need not be attached to the forestay.

7.0 RACING AREA: The racing area is the Santa Barbara Channel between Santa Barbara harbor and Ventura harbor, including the waters surrounding Anacapa and Santa Cruz Islands.

8.0 THE COURSES: When an oil platform is a mark of the course, its associated mooring buoy(s) are also part of the mark and shall be passed on the same side as the oil platform.

8.1 HARDWAY COURSE: From the start line off Santa Barbara, leave the fixed mark H and Santa Cruz Island to port, and finish in the Ventura Harbor entrance channel. The handicap length of this course is 67 nm.

8.2 COASTWISE SPINNAKER COURSE: From the start line off Santa Barbara, leave the fixed mark H and Anacapa Island to port, leave the R2 Ventura entrance buoy to starboard, and finish in the Ventura Harbor entrance channel. The handicap length is 47 nm.

8.3 COASTWISE NON-SPINNAKER COURSE: From the start line off Santa Barbara, leave the fixed mark H to port, leave drilling platforms C, Habitat and Grace to port, and finish in the Ventura Harbor entrance channel. The handicap length is 29 nm.

8.4 ORCA MULTIHULL COURSE: From the start line off Santa Barbara, leave the fixed mark H and Anacapa Island to port, leave the R2 Ventura entrance buoy to starboard, and finish in the Ventura Harbor entrance channel. The handicap length is 47 nm.

9.0 MARKS:

H Buoy: All classes leave this fixed buoy to port. Latitude 34° 22' 59" N; Longitude 119° 41' 07" W.

ANACAPA ISLAND: Coastwise Spinnaker classes and ORCA Multihull class leave to port.

SANTA CRUZ ISLAND: Hardway Course classes leave to port.

DRILLING PLATFORM "C": Coastwise Course Non-spinnaker classes leave to port. Latitude 34° 19' 59" N; Longitude 119° 37' 54" W.

DRILLING PLATFORM HABITAT: Coastwise Course Non-spinnaker classes leave to port. Latitude 34° 17' 11" N; Longitude 119° 35' 7" W.

DRILLING PLATFORM GRACE: Coastwise Course Non-spinnaker classes leave to port. Latitude 34° 10' 47" N; Longitude 119° 28' 05" W.

R2 Ventura entrance buoy: Coastwise Spinnaker classes and ORCA Multihull class leave to starboard. Latitude 34° 14.4' N; Longitude 119° 16.7' W.

10.0 THE START: *All boats shall check in with the Race Committee by radio (VHF channel 71) or by hailing the Race Committee boat prior to the warning signal for the first start. The Race Committee will not respond during the start sequence.*

10.1: The Race will be started in accordance with RRS Rule 26.

10.2: The starting line will be between the course side of an orange inflatable mark at the port end and the staff displaying an orange flag or shape on the Race Committee boat at the starboard end. The starting line will be south of the Santa Barbara harbor jetty. The Race Committee will monitor VHF channel 71.

10.3: Boats whose warning signal has not been made shall avoid the starting area.

11.0 RECALLS:

11.1 Individual recalls will be signaled in accordance with RRS Rule 29.1 (1 sound signal plus code flag "X").

11.2 General recalls will be signaled in accordance with RRS Rule 29.2 (2 sound signals plus code flag "first substitute").

12.0 THE FINISH: The finish line, depicted in Figure 1, will be in the Ventura Harbor entrance channel on a line between the seaward-most palm tree on the starboard shore and a sculpture on the port shore.

SPINNAKERS SHALL BE STRUCK AT THE ELBOW OF THE DETACHED BREAKWATER. BOATS SAILING BEYOND THIS POINT WITH SPINNAKERS SET WILL BE SCORED DSQ (disqualified). This changes RRS Rules 63.1 and A5.

The Race Management Team will monitor VHF channel 71 on station at the finish line. The first boat to finish in each class other than those sailing the HARDWAY course around Santa Cruz is requested to notify the Race Management Team when **30 minutes** from the finish line. Boats sailing the HARDWAY Course around Santa Cruz Island shall notify the Race Management Team when approximately **1 hour** from the finish. Boats finishing after dark shall illuminate their mainsail number for identification and hail the Race Committee on VHF for acknowledgement. Failure to do so carries no penalty. The finish line will be manned until midnight PDT on Saturday, May 11th. Boats finishing after that time shall record their own finish time and report it to the Race Management Team. Contact info for finishers: VHF channel 71, PBYC phone 805-644-6672, PBYC PRO cell 805-444-0223.

13.0 TIME LIMIT: The time limit to complete the race is 0800 PDT on Sunday, May 12, 2024. Boats not finished within this limit will be scored DNF (did not finish).

14.0 PROTESTS: Protests shall be written on forms available online and at PBYC and lodged there within 2 hours of the finish of the protesting boat, within 2 hours of the protesting boat's return to harbor if she retires, or by 0800 PDT on Sunday, May 12, 2024, whichever is later.

15.0 TROPHIES: All trophies will be awarded following the Final Race of the Island Series, the Tri-point Ocean Race, on Sunday, August 11, 2024. Monohull boats are required to have current PHRF ratings in order to be eligible to win trophies. Class trophies will be awarded as follows:

<u>Number of Boats in the Class</u>	<u>Trophies</u>
1-3	1 st Place
4-6	1 st & 2 nd Place
7-or more	1 st , 2 nd & 3 rd Place

The following perpetual trophies will also be awarded:

CLUB CHAMPIONSHIP – The places of the top three PHRF Spinnaker boats from each club will be totaled and the club with the lowest points will be awarded this trophy.

OVERALL WINNER - This trophy will be awarded to the skipper of the boat with the lowest corrected time among all PHRF classes sailing the HARDWAY Course around Santa Cruz Island.

FIRST TO FINISH - This trophy will be awarded to the skipper of the first monohull boat to finish the HARDWAY Course around Santa Cruz Island.

COASTWISE SPINNAKER - This trophy will be awarded to the skipper of the boat with the lowest corrected time among all boats sailing in the Coastwise Course spinnaker classes.

COASTWISE NON-SPINNAKER - This trophy will be awarded to the skipper of the boat with the lowest corrected time among all boats sailing in the Coastwise Course non-spinnaker classes.

16.0 SAFETY:

16.1: All boats shall carry the equipment specified by the USCG. For all Hardway course boats the US Coastal level USSERs are modified as follows: 2.4.4 coated lifelines are permitted, 3.6.4 USCG rather than SOLAS flares are permitted, 3.8.2 is waived, and 3.1.2 PFDs are permitted to

have no crotch strap. US Nearshore level Monohull USSERs are modified as follows: add Coastal USSER 2.4.1 - 2.4.7 to require lifelines; coated lifelines are permitted. Offshore multihull class boats shall carry safety equipment as specified by the Multihull USSERs for Nearshore races.

16.2: Any boat that abandons, retires, or in any way does not finish the race shall notify the Race Management Team in person, by radio on VHF channel 71, or by telephone to PBYC at 805-644-6672. PBYC Race Chair's cell phone number is 805-444-0223. Failure to notify may result in a Coast Guard search.

- 17. DISCLAIMER OF LIABILITY:** Competitors in this event are participating entirely at their own risk. See RRS 4, Decision to Race. Racers release PBYC, SBSC, their officers, agents, committee persons, and sponsors from any and all liability for any illness, injury to crew or damage to vessel arising out of participating in this event to the extent that such release does not discharge the racer's insurance carrier under the provisions of the insurance policies on the vessel. The racers assume any risk of illness, injury or death arising out of participating in this event, failure or breakage of the vessel or any of its equipment, or weather conditions.
- 18. INSURANCE:** Each participating boat shall be insured with valid third-party liability insurance with a minimum coverage of \$300,000 per incident or the equivalent.

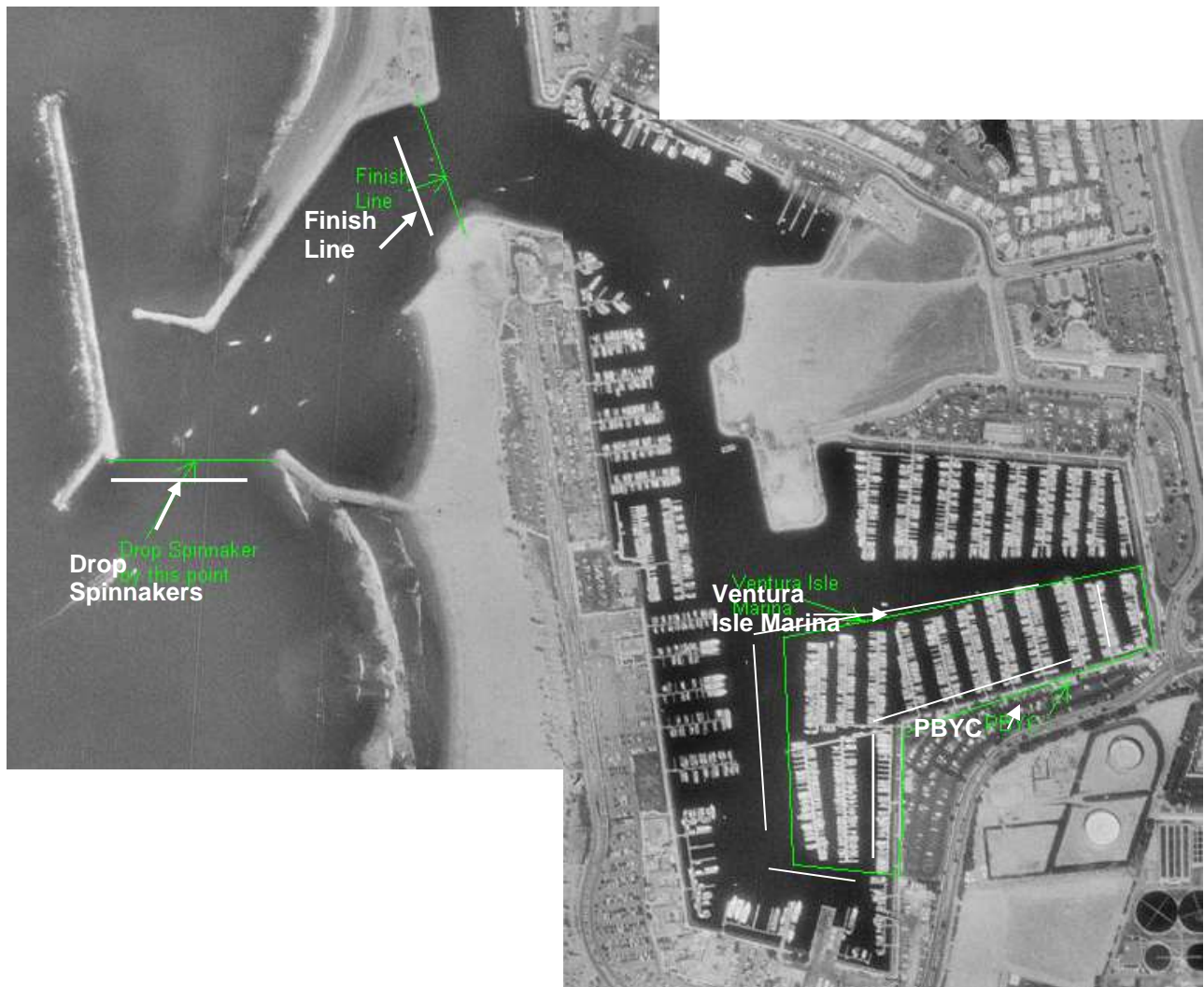


Figure 1. Ventura Harbor Entrance Showing Finish Line, Ventura Isle Marina, and PBYC

3 % < \$ Q Q R X Q F H V
W K H V W D Q Q X D O , \

1 \$9 , * \$7 , 2 1
& + \$ / / (1 * (

\$V SDUW RI RXU UDFLQJ KHULWDJH DQG WR PDNH WKLQJV LQV
SRLQWV JHQHUDW (DFK \FD FQD QJH TXHVWLRQ ZKHQ DQRZHUR
(DFK FUHZ PHPEHU FDQ FQW & KDOOHQJH FRQVWLWV RI QDYL
WR ZRUN RXW ZKLOH UDFLQJ

7KH OLQN WR WKH 1DYLJDWLRQ &KDOOHQJH ZLOO EH SRVWHG
ZZSE\F RUJ QDYLJDWH
7KLV OLQN ZLOO EH DFWLYDWHG DIWHU WKH VWDUW

*RRG OXFN DQG PRVW RI DOO KDYH IXQ