

# 2023 PBYC SPRING SERIES

## SAILING INSTRUCTIONS

ORGANIZING AUTHORITY: Pierpont Bay Yacht Club, Ventura, California.

- RULES:** This series will be governed by the *rules* as defined in the *Racing Rules of Sailing* (RRS). The U.S. Safety Equipment Requirements (SERs) apply for both monohull and multihull boats. RRS 27.1 will be changed per paragraph 7.3; RRS 32.2 per paragraph 9.1; RRS 63.1 and A5 per paragraph 9.3; SERs per paragraph 13.
- ENTRIES:** Eligible boats may be entered by completing registration via Regatta Network through the following link for the Series and Race #1  
[https://www.regattanetwork.com/clubmgmt/applet\\_registration\\_form.php?regatta\\_id=25779](https://www.regattanetwork.com/clubmgmt/applet_registration_form.php?regatta_id=25779)  
If you wish to enter only Race #2, the link is  
[https://www.regattanetwork.com/clubmgmt/applet\\_registration\\_form.php?regatta\\_id=25780](https://www.regattanetwork.com/clubmgmt/applet_registration_form.php?regatta_id=25780)  
If you wish to enter only Race #3, the link is:\_  
[https://www.regattanetwork.com/clubmgmt/applet\\_registration\\_form.php?regatta\\_id=25781](https://www.regattanetwork.com/clubmgmt/applet_registration_form.php?regatta_id=25781)  
Entries close at 1700 on the Friday preceding each race day. PHRF area A Random Leg Course handicaps will be used. Regardless of class, PHRF-handicapped boats are required to have a current PHRF rating by March 11, 2023 to be eligible for series trophies.
- NOTICES TO COMPETITORS:** Notices to competitors will be posted on Regatta Network's Official Notice Board and may also be emailed to entrants.
- CHANGES TO SAILING INSTRUCTIONS:** Any change to the Sailing Instructions will be posted Regatta Network's Official Notice Board before 9:00 am on the day it will take effect.
- SCHEDULE OF RACES:** The scheduled time of the warning signal for the first class is 10:55 am on each race day. Races are scheduled as follows:  
Race #1: Saturday, February 18, 2023  
Race #2: Saturday, March 11, 2023  
Race #3: Saturday, March 25, 2023

### 6. CLASSES:

6.1 Class assignments will be posted on the Regatta Network Official Notice Board after 1700 on the Friday preceding each race day. There will be no in-person skippers meeting. There will be one or more PHRF handicapped Spinnaker classes, one or more Non-Spinnaker classes, and an ORCA-handicapped class.

6.2 Class Flags: Class flags will be solid color as described below:

Class	Flag
A	Red
B	White
C	Green
D	Yellow
E	Blue
F	Orange

6.3 All boats shall check in with the Race Committee by radio on VHF channel 69 prior to their start.

## 7. THE COURSES:

- 7.1 The courses will be chosen from the 2023 PBYC Spring Series Course Chart, which is hereby made part of these Sailing Instructions. The MARKS are described in this Course Chart.
- 7.2 The approximate compass bearing from the starting line to the first mark is indicated on the Course Chart.
- 7.3 Designation of the course to be sailed will be signaled from the race committee boat before or with the warning signal for the first starting class. For succeeding classes, the course signal will be displayed with or as soon as practicable following the warning signal for that class. This changes RRS Rule 27.1. Course numbers are black on white placards displayed on the committee boat in such a location that provides greatest visibility to the racers.
- 7.4 When an oil platform is a mark of the course, its associated mooring buoy(s) are also marks of the course. Such buoys are to be passed on the same side as the oil platform is to be passed.

## 8. THE START:

- 8.1 The RC will attempt to start the classes with no delay between the starting signal of one class and the warning signal of the next class (rolling sequence).
- 8.2 The starting line will be located between the course side of a permanent mark offshore from the Mandalay Power Plant as the port-end mark and an orange flag or shape mounted on the Committee Boat as the starboard-end mark.
- 8.3 Boats whose warning signal has not been made shall keep clear of the starting area and of boats whose warning signal has been made.

9. **THE FINISH:** The finish shall be on a line between a permanent mark offshore from the Mandalay Power Plant and the stack of the power plant. The stack bears 57° M from the mark. All racers shall record the time that their bow crossed this line. All boats shall finish within 3 boatlengths of the mark. The finish time shall be reported to the RC.

10. **RETIREMENT:** A boat that has started and subsequently retires shall notify the RC as soon as possible. The RC will monitor VHF Channel 69 throughout the race. PBYC's phone number is (805) 644-6672; the PRO's cell number is (805) 444-0223.

11. **PROTESTS:** Protests shall be prepared on forms available online at the following link

[https://www.ussailing.org/wp-content/uploads/2022/01/US\\_Sailing\\_Hearing\\_Request\\_Form\\_20210301\\_Fillable.pdf](https://www.ussailing.org/wp-content/uploads/2022/01/US_Sailing_Hearing_Request_Form_20210301_Fillable.pdf)

or via the RRS app and emailed to the PRO at rcountess@aol.com within 2 hours of the finish of the protesting boat or within 2 hours of her return to harbor if she retires. .

12. **SCORING:** The Low-Point Scoring System (Appendix A of the Racing Rules) applies. This is a 3-race series with no throw-outs.

13. **SAFETY EQUIPMENT:** All PHRF classes shall carry the safety equipment specified by the U.S. Safety Equipment Requirements for U.S. Nearshore Races (Definition 1.0.3). The following changes are made to the Monohull SERs: In section 3.3.1 delete, "not be located below deck level. In section 3.19.1 delete, "permanently mounted." In addition, lifeline requirements 2.4.1 – 2.4.8 apply with the exception that coated lifelines are permitted. All

boats regardless of class shall carry a VHF radio capable of transmitting and receiving on channels 16 and 69.

**14. NON-SPINNAKER DEFINITIONS for PHRF Boats:**

14.1 No spinnakers or spinnaker-like sails such as flashers, cruising 'chutes, MPSs, gennakers, etc. are allowed. All headsails must meet the measurements of RRS 50.4.

14.2 Only one spinnaker pole or whisker pole may be used at a time and, when in use, shall be attached to the foremost mast.

14.3 The use of headsails larger than 155% LP carries a 6 second per mile penalty unless the boat is already rated for such larger sail.

14.4 More than one headsail may be carried set, and the headsails need not be attached to the forestay.

**15. TROPHIES:**

15.1 Series trophies will be awarded after the final race of the series. The number of series trophies awarded will be as follows:

<u>Number of Boats in the Class</u>	<u>Trophies</u>
2-3	1 <sup>st</sup> Place
4-6	1 <sup>st</sup> & 2 <sup>nd</sup> Place
7-or more	1 <sup>st</sup> , 2 <sup>nd</sup> & 3 <sup>rd</sup> Place

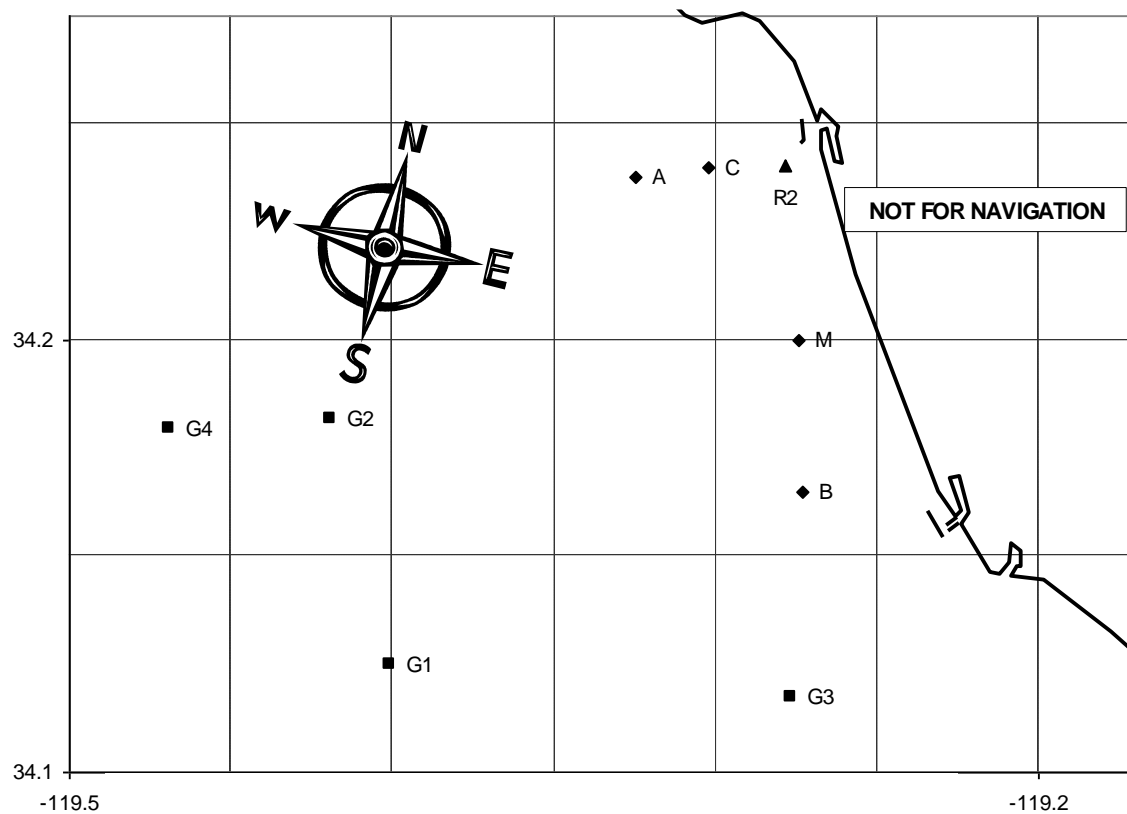
**16. DISCLAIMER OF LIABILITY:** Competitors participate in this event entirely at their own risk. See RRS Rule 3, Decision to Race. The organizing authority will not accept any liability for material damage or personal injury or death sustained in conjunction with or prior to, during, or after the event. Racers release PBYC, its officers, agents, committee persons, and sponsors from any and all liability for any injury to crew or damage to vessel arising out of participating in this event to the extent that such release does not discharge the racer's insurance carrier under the provisions of the insurance policies on the vessel.

**17. INSURANCE**

Each participating boat shall be insured with valid third-party liability insurance with a minimum cover of \$300,000 per incident or the equivalent.

# 2023 PBYC SPRING SERIES COURSE CHART

#	Course	Approx. Heading to 1st Mark, °M	Approx. Length
1	S Bs R2s F	158	9.0
2	S Bs As F	158	11.9
3	S Bs Cp Ap F	158	12.7
4	S Bs G2s F	158	17.4
5	S Bs G1s R2s F	158	21.2
6	S Gp F	165	9.7
7	S G3s R2s F	165	14.9
8	S G3s As F	165	16.6
9	S G3s R2p Ap F	165	18.7
10	S G3s G1s F	165	19.1
11	S G1s F	220	15.8
12	S G1s G2s F	220	19.0
13	S G1s R2p Ap F	220	19.5
14	S G2s F	250	15.0
15	S G2s R2s F	250	17.9
16	S As Cs As F	300	7.5
17	S As R2s F	300	8.8
18	S As Mp R2s F	300	10.5
19	S R2p Ap F	340	8.8
20	S R2p Bp F	340	9.0
21	S R2p G2p F	340	17.9
22	S Cs F	320	5.4
23	S Cp Ap F	320	7.9



- | MARKS |  | APPROXIMATE LOCATION |                  |
|-------|--|----------------------|------------------|
| A     | Fish Sticks spar buoy                                  | L: 34° 14.5' N       | Lo: 119° 19.8' W |
| B     | Wes spar buoy  | L: 34° 9.9' N        | Lo: 119° 16.4' W |
| C     | Chips spar buoy  | L: 34° 14.4' N       | Lo: 119° 18.2' W |
| M     | Mandalay spar buoy                                     | L: 34° 12.0' N       | Lo: 119° 16.5' W |
| R2    | Whistle buoy R"2V"                                     | L: 34° 14.4' N       | Lo: 119° 16.7' W |
| G1    | Platform Gail  | L: 34° 7.5' N        | Lo: 119° 24.0' W |
| G2    | Platform Gilda   | L: 34° 10.9' N       | Lo: 119° 25.1' W |
| G3    | Platform Gina  | L: 34° 7.0' N        | Lo: 119° 16.6' W |
| S     | Start in vicinity of Mark M; see Sailing Instructions  |                      |                  |
| F     | Finish in vicinity of Mark M; see Sailing Instructions |                      |                  |