

2019 PBYC SPRING SERIES

SAILING INSTRUCTIONS

ORGANIZING AUTHORITY: Pierpont Bay Yacht Club, Ventura, California.

1. **RULES:** This series will be governed by the *rules* as defined in the *Racing Rules of Sailing* (RRS), the PHRF Class Rules, the ORCA Bylaws Section 6, and U.S. Safety Equipment Requirements (SERs). RRS 27.1 will be changed per paragraph 7.3; RRS 32.2 per paragraph 9.1; RRS 63.1 and A5 per paragraph 9.3; SERs per paragraph 13. Racers are reminded that they are bound by the International Regulations for Preventing Collisions at Sea when encountering vessels that are not racing.
2. **ENTRIES:** Eligible boats may enter by completing registration with PBYC. PHRF area A Random Leg Course handicaps will be used. Regardless of class, PHRF-handicapped boats will be required to have a current PHRF rating by February 23, 2019 to be eligible for series trophies.
3. **NOTICES TO COMPETITORS:** Notices to competitors will be posted on PBYC's bulletin board located on the deck near the front door.
4. **CHANGES TO SAILING INSTRUCTIONS:** Any change to the Sailing Instructions will be posted on PBYC's bulletin board before 9:00 am on the day it will take effect.
5. **SCHEDULE OF RACES:** The scheduled time of the warning signal for the first class is 10:55 am on each race day. Races are scheduled as follows:
 - Race #1: Saturday, February 9, 2019
 - Race #2: Saturday, February 23, 2019
 - Race #3: Saturday, March 9, 2019

6. CLASSES:

- 6.1 There will be one or more PHRF handicapped Spinnaker classes, one or more Non-Spinnaker classes, and an ORCA-handicapped class. Class breaks will be determined by entries and announced at the skippers meeting at 8:30 am on February 9, 2019.
- 6.2 Class Flags: Class flags will be solid color as described below:

Class	Flag
A	Red
B	White
C	Green
D	Yellow
E	Blue
F	Orange

- 6.3 All boats shall check in with the Race Committee by radio on VHF Ch 69 prior to their start.

7. THE COURSES:

- 7.1 The courses will be chosen from the 2019 PBYC Spring Series Course Chart, which is hereby made part of these Sailing Instructions. The MARKS are described in this Course Chart.
- 7.2 The approximate compass bearing from the starting line to the first mark is indicated on the Course Chart.
- 7.3 Designation of the course to be sailed will be signaled from the race committee boat before or with the warning signal for the first starting class. For succeeding classes, the course signal will be displayed with or as soon as practicable following

the warning signal for that class. This changes RRS Rule 27.1. Course numbers are black on white placards displayed on the committee boat in such a location that provides greatest visibility to the racers.

7.4 When an oil platform is a mark of the course, its associated mooring buoy(s) are also marks of the course. Such buoys are to be passed on the same side as the oil platform is to be passed.

8. THE START:

8.1 The order of starts will be announced at the skippers meeting each race day. The RC will attempt to start the classes with no delay between the starting signal of one class and the warning signal of the next class (rolling sequence).

8.2 The starting line will be located between the course side of a permanent mark offshore from the Mandalay Power Plant as the port-end mark and an orange flag or shape mounted on the Committee Boat as the starboard-end mark.

8.3 Boats whose warning signal has not been made shall keep clear of the starting area and of boats whose warning signal has been made.

9. THE FINISH:

9.1 The finish shall be in the Ventura Harbor entrance channel on a line between the seaward-most palm tree on the starboard (south) shore, and a statue on the port shore. If conditions in the Ventura Harbor entrance warrant, the RC may instruct racers to record their finish times when crossing a line between the whistle buoy (R2) and the green flashing light on the detached breakwater. This line may be crossed in either direction, but must be crossed within 3 boat-lengths of the whistle buoy. This alternate finish will be signaled before the start by code flag "S" displayed on the Committee Boat. This changes RRS Rule 32.2.

9.2 The first finisher is requested to notify the RC by VHF (Ch 69) or by phone (PBYC's phone number is (805) 644-6672; the PRO's cell number is (805) 444-0223) when approximately 30 minutes from the finish to allow the RC time to man the finish line. The RC will monitor VHF Channel 69 throughout the race. The Race Committee will remain on station until 6 pm. Boats finishing after that time shall record their finish time by GPS reference and report it to the Race Committee at the first reasonable opportunity.

9.3 Spinnakers shall be struck at the elbow of the detached breakwater. Any boat sailing beyond this point with a spinnaker set will be scored DSQ by the RC. This changes RRS Rules 63.1 and A5.

9.4 Boats finishing after dark are advised to illuminate the sail number and hail the RC for acknowledgement.

10. **RETIREMENT:** A boat that has started and subsequently retires shall notify the RC. The RC will monitor VHF Channel 69 throughout the race. PBYC's phone number is (805) 644-6672; the PRO's cell number is (805) 444-0223.

11. **PROTESTS:** Protests shall be delivered to PBYC within 2 hours of the finish of the protesting boat, or within 2 hours of her return to her harbor if she retires. Protest forms are available at PBYC.

12. **SCORING:** The Low-Point Scoring System (Appendix A of the Racing Rules) applies. The finishing positions of boats not entered in the series will be disregarded for series scoring; however, they are eligible for daily trophies. This is a 3-race series with no throw-outs.

13. **SAFETY EQUIPMENT:** All PHRF classes shall carry the safety equipment specified by the U.S. Safety Equipment Requirements for U.S. Nearshore Races (Definition 1.0.3).

Refer to: <https://www.ussailing.org/wp->

[content/uploads/2018/03/US_SER_2018.](https://www.ussailing.org/wp-content/uploads/2018/03/US_SER_2018.)

[0_Categories.pdf](#), which is also available on PBYC's web site, www.pbyc.org. In addition, lifeline requirements 2.4.1 – 2.4.8 apply with the exception that coated lifelines are permitted. The minimum number of persons aboard shall be two. Requirement 3.8.2 is modified in that the radio need not have DSC/GPS capability. All ORCA class entries shall carry the safety equipment specified by ORCA Bylaws Section 6. All boats regardless of class shall carry a VHF radio capable of transmitting and receiving on channels 16 and 69.

14. NON-SPINNAKER DEFINITIONS:

14.1 No spinnakers or spinnaker-like sails such as flashers, cruising 'chutes, MPSs, gennakers, etc. are allowed. All headsails must meet the measurements of RRS 50.4.

14.2 Only one spinnaker pole or whisker pole may be used at a time and, when in use, shall be attached to the foremost mast.

14.3 The use of headsails larger than 155% LP carries a 6 second per mile penalty unless the boat is already rated for such larger sail.

14.4 More than one headsail may be carried set, and the headsails need not be attached to the forestay.

15. TROPHIES:

15.1 Daily prizes will be awarded after each race.

15.2 Series trophies will be awarded after the last race. The number of series trophies awarded will be as follows:

<u>Number of Boats in the Class</u>	<u>Trophies</u>
2-3	1 st Place
4-6	1 st & 2 nd Place
7-or more	1 st , 2 nd & 3 rd Place

16. DISCLAIMER OF LIABILITY: Competitors participate in this event entirely at their own risk. See RRS Rule 4, Decision to Race. The organizing authority will not accept any liability for material damage or personal injury or death sustained in conjunction with or prior to, during, or after the event. Racers release PBYC, its officers, agents, committee persons, and sponsors from any and all liability for any injury to crew or damage to vessel arising out of participating in this event to the extent that such release does not discharge the racer's insurance carrier under the provisions of the insurance policies on the vessel.

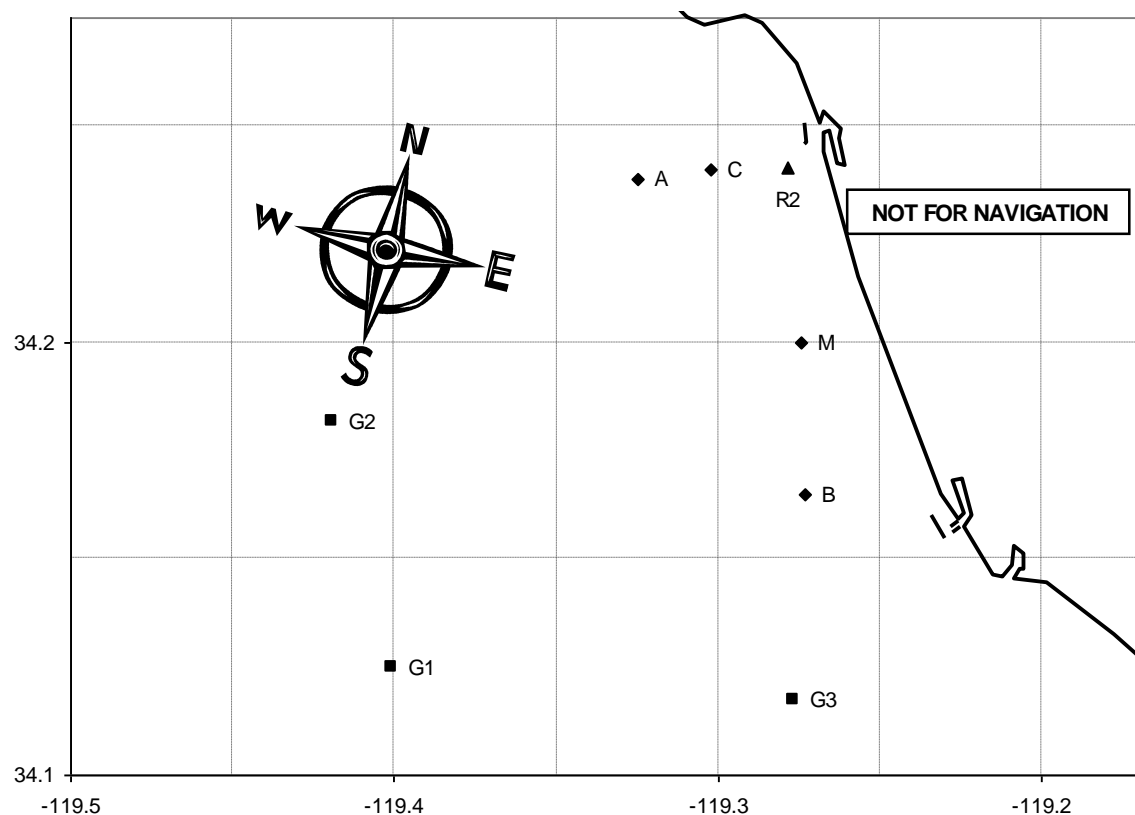
17. INSURANCE

Each participating boat shall be insured with valid third-party liability insurance with a minimum cover of \$300,000 per incident or the equivalent.

https://www.ussailing.org/wp-content/uploads/2018/03/US_SER_2018.0_Categories.pdf

2019 PBYC SPRING SERIES COURSE CHART

#	Course	Approx. Heading to 1st Mark, °M	Approx. Length
1	S Bs R2s F	165	7.4
2	S Bs Cp Ap F	165	11.3
3	S Bs As F	165	10.6
4	S Bs G2s F	165	18.2
5	S Bs G1s R2s F	165	19.1
6	S G3s R2s F	165	13.1
7	S G3s As F	165	16.1
8	S G3s R2p Ap F	165	18.2
9	S G3s G1s R2s F	165	21.3
10	S G1s R2s F	220	18.0
11	S G1s As F	220	19.0
12	S G1s G2s F	220	20.2
13	S G1s R2p Ap F	220	23.0
14	S G2s R2s F	250	16.2
15	S G2s Mp R2s F	250	18.2
16	S G2p Mp Cs F	250	19.6
17	S G2s R2p Ap F	250	21.3
18	S As F	300	7.0
19	S As Cs As F	300	9.6
20	S As Mp R2s F	300	10.7
21	S Ap Mp Cs F	300	12.1
22	S Ap Bp R2s F	300	14.4
23	S R2p Ap F	340	8.3
24	S R2p Bp R2s F	340	12.3
25	S R2p G2p F	340	19.2
26	S Cs F	320	4.6



MARKS		APPROXIMATE LOCATION	
A	Fish Sticks spar buoy	L: 34° 14.5' N	Lo: 119° 19.8' W
B	Wes spar buoy	L: 34° 9.9' N	Lo: 119° 16.5' W
C	Chips spar buoy	L: 34° 14.4' N	Lo: 119° 18.2' W
M	Mandalay spar buoy	L: 34° 12.0' N	Lo: 119° 16.5' W
R2	Whistle buoy R"2V"	L: 34° 14.4' N	Lo: 119° 16.7' W
G1	Platform Gail	L: 34° 7.5' N	Lo: 119° 24.0' W
G2	Platform Gilda	L: 34° 10.9' N	Lo: 119° 25.1' W
G3	Platform Gina	L: 34° 7.0' N	Lo: 119° 16.6' W
S	Start in vicinity of Mark M; see Sailing Instructions		
F	Finish at Ventura Harbor; see Sailing Instructions		